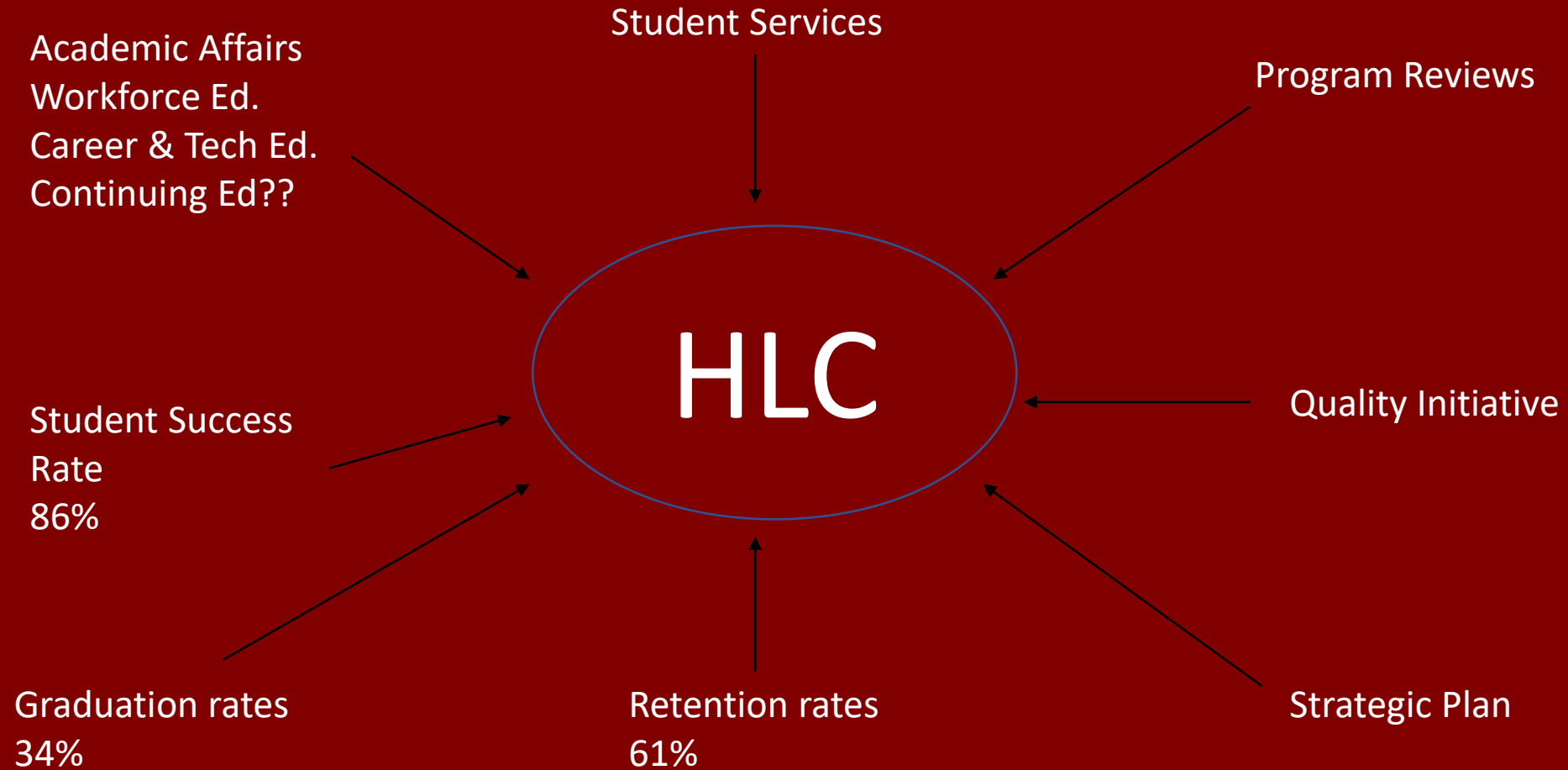


Fort Scott Community College HLC Comprehensive Reaffirmation of Accreditation

HLC CAMPUS AWARENESS MEETING 1



OPERATIONAL DIRECTION



HLC CRITERION TEAMS

- (Responsible for collecting evidence and reviewing narrative draft)
 - Criterion 1: Sara Sutton, Juley McDaniel, Sonia Gugnani, Vanessa Poyner
 - Criterion 2: Vanessa Poyner, Rory Chaplin, Courtney Metcalf, Ashley Keylon, Alyssa Martin
 - Criterion 3: Sonia Gugnani, Tracy Springer, Maria Bahr, Susie Arvidson, Kevin Thomure, Ashley Keylon
 - Criterion 4: Missy Scott, Doug Hurd, Juley McDaniel, Cindy Proctor, Sara Sutton, Amber Swarens
- Federal Compliance Team
 - Sonia Gugnani, Ben Souza, Courtney Metcalf, Ashley Keylon, Vickie Laderer, Vanessa Poyner, Tanya Potthoff



Fort Scott Community College

Welcomes
HLC

The Higher Learning Commission

October 13th and 14th, 2025

Join us as we host the Higher Learning
Commission for an accreditation visit
on the historic campus of
Fort Scott Community College

You are invited to attend!



Higher
Learning
Commission



FORT SCOTT TRIBUNE (PUBLIC NOTICE)

Sliced Whole Wheat
Breadstick
Cottage Cheese
Tomato Slices
Fruit of the Day
Milk



CHENEY WITT
FUNERAL CHAPEL

201 S. Main • 223-1186

www.cheneywitt.com

Find Us FAST In

**Names
AND
Numbers**
***** Five Star Phone Book!

Friday, August 29
CLOSED

Monday, Sept. 1
Closed for Labor Day

Tuesday, Sept. 2
Tater Tot Casserole
Buttered Carrots
Garlic Green Beans
Whole wheat
Dinner Roll
Fruit of the Day
Milk

Wheat Bread, Margarine &
1% Milk served with all menus
unless otherwise specified.

was released at 11:07 p.m. 47, was arrested at 8:38 p.m.

INVITATION TO COMMENT: FSCC HLC EVALUATION

Fort Scott, KS – Fort Scott Community College is seeking comments from the public about the college in preparation for its periodic evaluation by its regional accrediting agency. The college will host a visit on October 13-14, 2025, from a team of peer reviewers representing the Higher Learning Commission. The team will review the institution's ongoing ability to meet HLC's Criteria for Accreditation. Fort Scott Community College has been accredited by HLC since 1976. Comments must be in writing and must address substantive matters related to the quality of the institution or its academic programs.

Submit comments to HLC at
<https://www.hlcommission.org/for-students/submit-comments-about-an-institution/>
or mail them to the address below.

All comments must be received by September 10, 2025

Public Comment on Fort Scott Community College
Higher Learning Commission
230 South LaSalle Street, Suite 7-500
Chicago, IL 60604-1411

For details on submitting comments, visit the
HLC's website at www.hlcommission.org/comment or mail
comments to the address provided on the HLC website.

ence with law
officer, felony
resist; Kansas
violation; and
of opiates/opi
ic drugs and ce

**DESIGN
FLORI**

~ by Seka

620-223-5

+19

Mo

GIRARD ME
1624 S. N

JUST WALK IN!

HOSPITALITY COMMITTEE

Chair: Tori Murphy

Preecia Howser

Suzanne Griffin

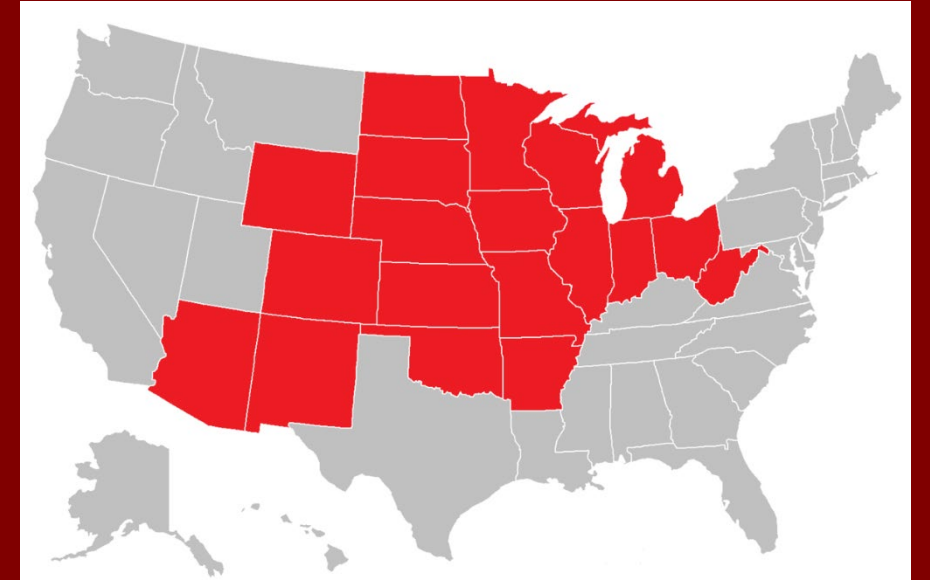


HIGHER LEARNING COMMISSION (HLC)

- FSCC is accredited by the Higher Learning Commission.
- HLC accredits degree-granting post-secondary educational institutions in the United States.
- “Accreditation” is a review of the quality of higher education institutions and programs. Accreditation is a major way that students, families, government officials, and the press know that an institution or program provides a quality education.

WHO IS HLC?

- Barbara Gellman-Danley, President
- Staff Liaisons
- Peer Reviewers
- About 1,000 colleges and universities



Dr. Anthea Sweeney
HLC Liaison



SITE TEAM REVIEWERS

Chair: Jon K. Dalager
Instructor
Alexandria Technical and Community College

Kathryn L. Skulley
Dean of Assessment, Strategy, and Performance Excellence/ALO
Community College of Aurora, Colorado

Reviewer: Todd Russell DeKay
Vice President of Operations
Eastern New Mexico University-Roswell

Reviewer: Josephine M. Kershaw
Dean of Institutional Effectiveness and Innovation
Jefferson College

Donna G Wood
Vice President Academic and Student Affairs (Retired)
North Arkansas College Harrison, Arkansas

FORT SCOTT ACCREDITATION INFORMATION

- Current status: Accredited
- Status Dates
- Candidate 11/01/1969 - 03/30/1976
- Accredited 03/31/1976 - Present
- Most recent reaffirmation of accreditation: 2015 - 2016
- Next reaffirmation of accreditation: October 13-14, 2025

ACCREDITATION IS OUR LICENSE TO OPERATE:

Institutional accreditation allows FSCC to:

1. Issue recognized degrees and credentials
2. Issue (and accept) transferable credit
3. Students to receive Title IV federal aid (Pell, Loans, and Other)
4. Receive state funding as a public institution
5. Qualify for federal, state, and private grants

The COMPREHENSIVE REVIEW HAS 3 PARTS:



FEDERAL COMPLIANCE REVIEW

- Assignment of Credits, Program Length and Tuition
- Institutional Mechanisms for Handling Student Complaints
- Publication of Transfer Policies
- Practices for Verification of Student Identity
- Protection of Student Privacy
- Publication of Student Outcome Data
- Standing With State and Other Accreditors

The COMPREHENSIVE REVIEW HAS 3 PARTS:



ASSURANCE ARGUMENT

- Criterion 1-4
- Tell our story in 35,000 words or <
- Evidence (Appendices) Show CANOPY here

The self-study report is your institution's self-reflection and the cornerstone of the information you need for your peer review visit.



The COMPREHENSIVE REVIEW HAS 3 PARTS:



ASSURANCE ARGUMENT CRITERIA

Criterion 1- Mission

The institution's mission is clear and articulated publicly; it guides the institution's operations.

Criterion 2 - Integrity: Ethical and Responsible Conduct

In fulfilling its mission, the institution acts with integrity; its conduct is ethical and responsible.

Criterion 3 - Teaching and Learning for Student Success

The institution demonstrates responsibility for the quality of its educational programs, learning environments and support services, and it evaluates their effectiveness in fulfilling its mission. The rigor and quality of each educational program is consistent regardless of modality, location or other differentiating factors.

Criterion 4 - Sustainability: Institutional Effectiveness, Resources, and Planning

The institution's resources, structures, policies, procedures and planning enable it to fulfill its mission, improve the quality of its educational programs, and respond to future challenges and opportunities.



PATHWAYS FOR REAFFIRMATION OF ACCREDITATION

- Two primary pathways: Standard and Open
- FSCC: Open Pathway
 - 10 year cycle
 - Focuses on quality assurance and institutional improvement
 - Unique improvement component – Quality Initiative provides institutions the opportunity to pursue improvement projects that meet their current needs and aspirations.
- One Comprehensive Evaluation Visit



QUALITY INITIATIVE

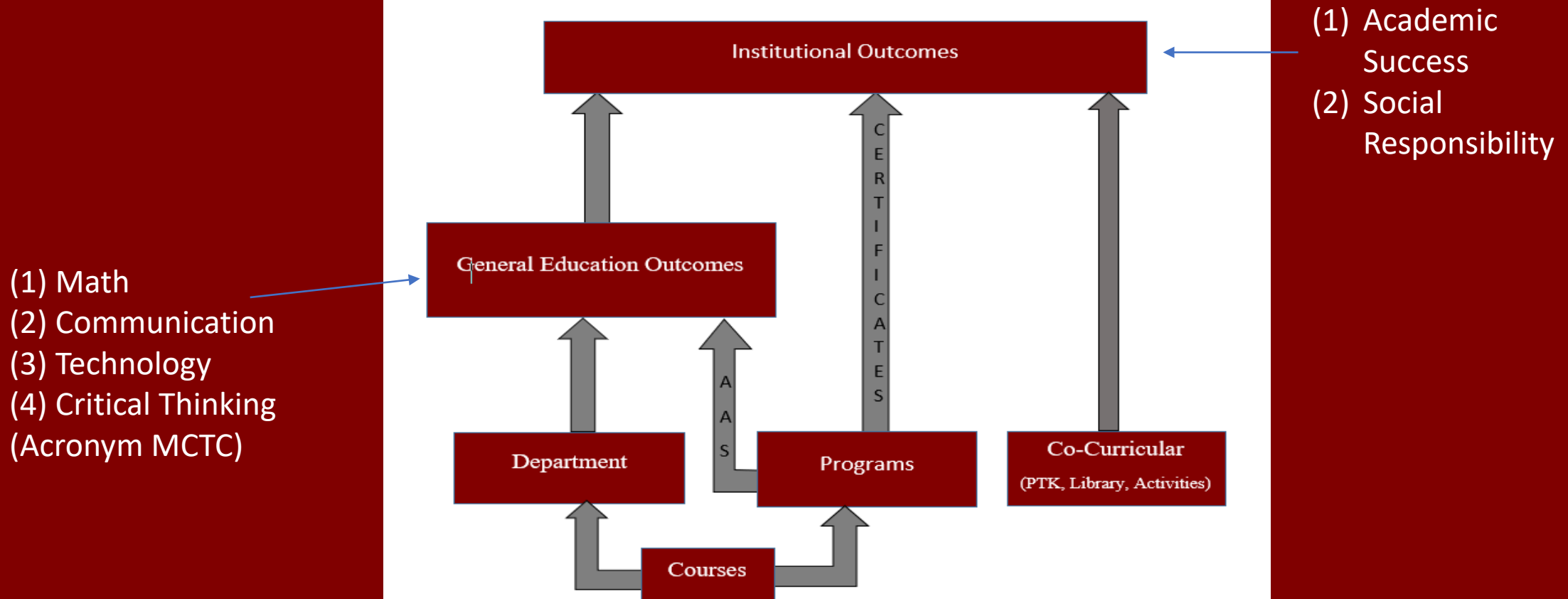
- Holistic Assessment Plan
- Assessment at FSCC involves improving student learning through systematic collection of data and using that data to make informed curricular changes. The main objective of assessment is to improve the overall educational experience based on the evidence resulting from comprehensive data collection.

QUALITY INITIATIVE

- Assessment at FSCC focuses on evaluation of student learning outcomes at the following levels:
- Course (Base level)
- Program Learning Outcomes (PLO)
- Degree Outcomes
- General Education Learning Outcomes (GELO)
- Institutional (ILO)
- Co-curricular (“The FSCC co-curricular experience is learning that supports the academic curriculum”).

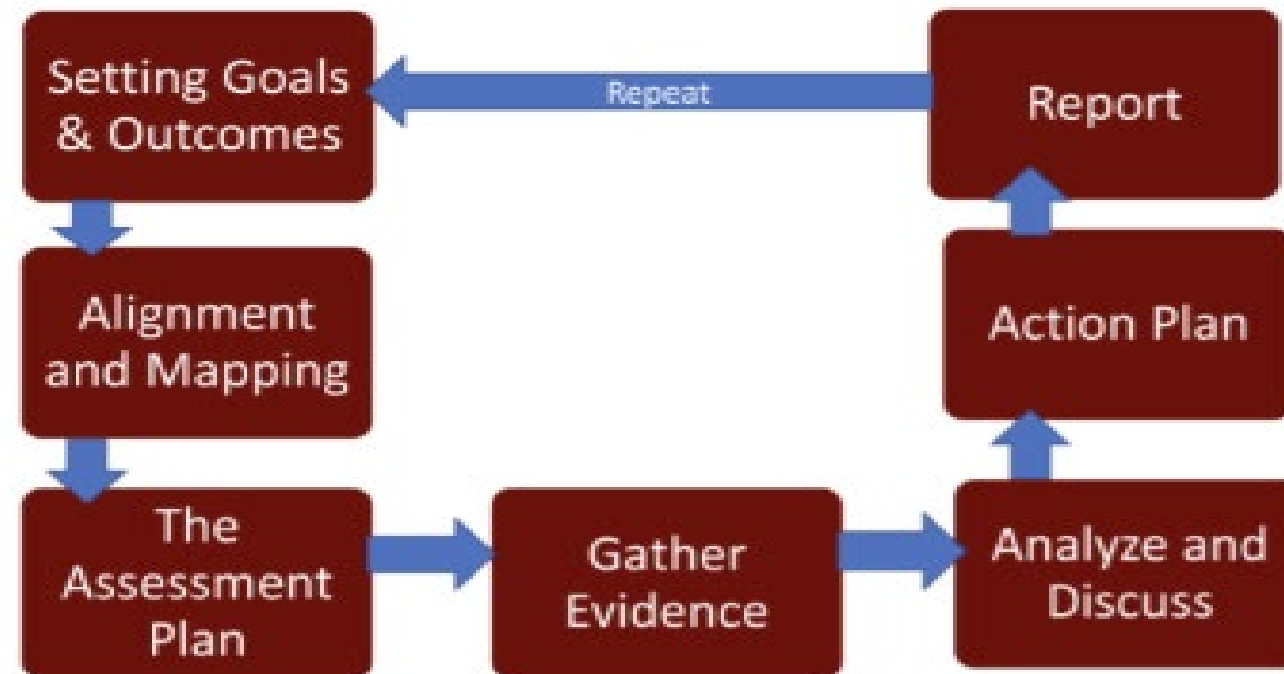
LEVELS OF ASSESSMENT

Levels of Assessment



Assessment Process: Program & Course

Data is collected and reported every semester (formative) and cycle is completed after the fourth semester (summative).



1. Levels of Assessment

- **Course Level Outcomes (CLOs)** – What we want students to know and do after taking the class.
 - Align assignments (rubric evaluation tool)/exams with CLOs; assess CLOs every semester. Courses mapped to PLOs.
- **Program Level Outcomes (PLOs)** – What we want students to know and do when they finish our program.
 - Mapping (posted on department organization sites) shows how courses contribute to PLOs. Choose 1 PLO for improvement based on past results and report on PLO; write report/narrative on how students are performing per PLO targeted for improvement; discuss some of the following in your semester/annual report:
 - What do the numbers in the report mean to you? Discuss student performance and instructional strategies.
 - Discuss any instructional strategies that you have done this term or will do improve student learning. This discussion is a mini action plan during 4 semesters of reporting in one assessment cycle, also called summative assessment). The action plan shows how you used data to improve student learning outcomes.
 - What trends do you see in student learning over like terms (fall to fall, spring to spring) or over academic years?
 - *Source: adapted from Steve Dowell, NCCC).*
- **General Education Level Outcomes (GELOs)** – Define the specific knowledge, skills, and competencies students demonstrate upon completion of a general education degree program (AS, AA, AAS, AGS). GELOs are broad skills, as well as specific content knowledge and values, forming the foundation of an educated person. Relevant CLOs are mapped to GELOs for reporting (on website). GELOs: **(1) Math, (2) Communication, (3) Technology, (4) Critical Thinking (MCTC)**
- **Institutional Level Outcomes (ILOs)** – **(1) Academic Success & (2) Social Responsibility.** ILOs include the knowledge, skills, and aptitudes students acquire because of their experience at FSCC. Institutional outcomes represent a broad range of competence which applies to students in every program, including co-curricular and non-curricular experiences as well. (reports on website)

2. Expectations Context

- KBOR Expectations – Institutions must document assessment of student learning and use results to improve student outcomes for continuous improvement.
- Accreditation – HLC (Higher Learning Commission) requires assessment evidence for continued accreditation.

3. Assessment Cycle (Repeat Each Semester/Year)

- Plan – Define measurable learning outcomes (CLOs/PLOs) and align with assignments.
- Collect – Gather student work, rubric results, or surveys (direct & indirect evidence).
- Analyze – Summarize performance data; look for patterns & gaps.
- Act/Improve – Document curriculum/teaching changes. Close the loop.

4. Best Practices

- Clear, measurable, student-centered outcomes (Kansas Core Outcomes Groups (KCOG) meet every October to review outcomes to ensure seamless transfer of specified courses to other Kansas colleges and universities).
- Use rubrics for consistency.
- Share results for program-level discussion.
- Document changes (“closing the loop”).

5. Common Pitfalls

- Completing assessment for compliance only is not meaningful assessment for faculty or students.
- Assessment is **not** used to evaluate instructors or compare departments or divisions.
- Failing to use results to inform changes in instruction/curriculum negates purpose of assessment.

6. Reporting in Kansas

- Annual program assessment reports department/college.
- 5–7 year program review KBOR requirement. *FSCC faculty complete program reviews every 4 years (2 assessment cycles)*
- Evidence for HLC continuous improvement required.

7. Support & Resources

- Assessment coordinator (mariab@fortscott.edu) & office of institutional effectiveness (bens@fortscott.edu).
- Training & workshops—e.g.—in-service training, “Assessment Tips & Timeline” and this “Assessment Cheat Sheet.”
- KBOR Academic Affairs: https://www.kansasregents.org/academic_affairs

Questions to Expect from HLC Peer Reviewers:

- Describe your department's or institution's assessment program.
- What are the 4 FSCC General Education Learning Outcomes (GELOs)?
- How are the GELOs assessed and where are the results posted? How are the results used?
- How do you ensure faculty and staff are involved in the assessment process?
- How have you used assessment results to improve student learning or programs?
- What evidence demonstrates that students are achieving their learning outcomes?
- How does your assessment process connect to the institution's mission and strategic plan?
- What is the process for updating or adding new curriculum?
- What support is provided for faculty and staff involved in assessment? (**Resources** link in Blackboard organization sites, [Assessment Tips and Timeline](#), Assessment Cheat Sheet, Annual Assessment Report (will be posted on FSCC Assessment web page), contacting Assessment Coordinator.
- How do you ensure the quality and consistency of courses across different sections or delivery methods?

ETS Proficiency Profile Report for GELO Baseline Data Fall 2021-Spring 2025

Skill	FSCC Fall 21 (n=22)	Standard Deviation (F21)	FSCC Spring 22 (n=116)	Standard Deviation (S22)	FSCC Overall AY21/22 Mean (n=138)	National Mean 2016-2021 (75 institutions)
<i>Critical Thinking</i>	107.55	5.46	107.36	5.12	107.4	109.6
<i>Math</i>	111.59	5.94	110.76	4.61	110.9	111.7

Skill	FSCC Fall 22 (n=29)	Standard Deviation (F22)	FSCC Spring 23 (n=120)	Standard Deviation (S23)	FSCC Overall AY22/23 Mean (n=149)	National Mean 2016-2022 (69 institutions)
<i>Critical Thinking</i>	110.48	5.39	108.8	5.33	109.1	109.6
<i>Math</i>	112.48	5.22	111.44	4.61	111.6	111.6

Skill	FSCC Fall 23 (n=27)	Standard Deviation (F23)	FSCC Spring 24 (n=99)	Standard Deviation (S24)	FSCC Overall AY23/24 Mean (n=126)	National Mean 2019- 2024 (34 institutions)
<i>Critical Thinking</i>	108.59	6.54	107.92	4.91	108.1	109.1
<i>Math</i>	111.59	4.13	111.34	5.55	111.4	111

Skill	FSCC Fall 24 (n=41)	Standard Deviation (F24)	FSCC Spring 25 (n=120)	Standard Deviation (S25)	FSCC Overall AY24/25 Mean (n=161)	National Mean 2020-2025 (47 institutions)
<i>Critical Thinking</i>	114.5	5.79	117.21	6.62	116.5	108.9
<i>Math</i>	117.5	5.63	118.9	6.74	118.5	110.9

OPEN PATHWAY 10-YEAR CYCLE

- ✓ ▪ Prepare Assurance Filing (Years 1-3)
- ✓ ▪ Assurance Review (Year 4)
- ✓ ▪ Quality Initiative Proposal (Years 5-7)
- ✓ ▪ Quality Initiative Report (Years 7-9)
- Comprehensive Evaluation Visit (Year 10)
 - **Assurance Argument:** Narrative in which institutions explains how it meets criteria for accreditation, supported by evidence.
 - **Federal Compliance:** assures HLC institutions are meeting their Title IV responsibilities and complying with federal regulations.
 - **Student Opinion Survey:** 2 months prior to the visit



HLC COMPREHENSIVE SITE VISIT

- What happens during an HLC visit?
 - Agenda- 2 weeks before site visit
 - Typically includes meetings with board and leadership
 - Open forum sessions with faculty, staff, and students
 - Federal Compliance Review
 - Reviews Assurance Argument

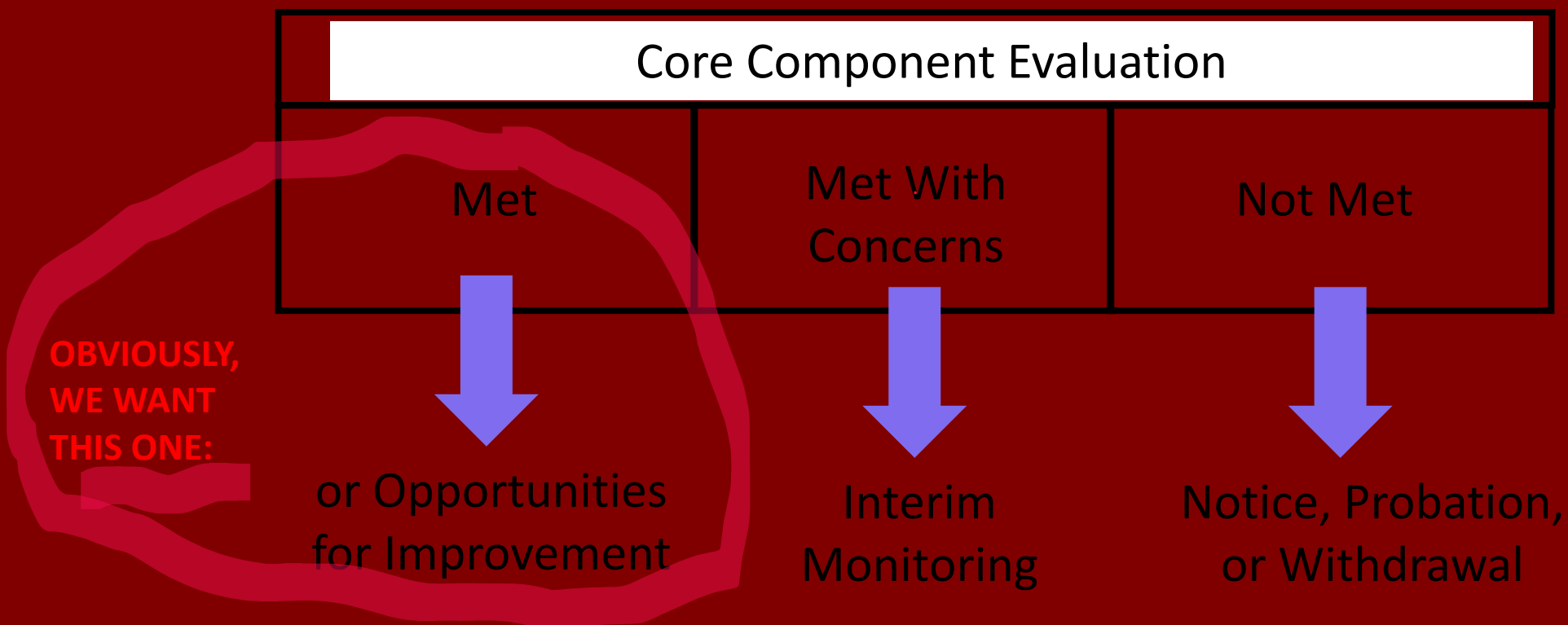


Revised Criteria	Location in 2020 Criteria
Criterion 1. Mission	Criterion 1. Mission
1.A. Mission Alignment	1.A.
1.B. Mission and Public Good	1.B.
1.C. Mission and Diversity of Society	1.C.
Criterion 2. Integrity: Ethical and Responsible Conduct	Criterion 2. Integrity: Ethical and Responsible Conduct
2.A. Integrity	2.A.
2.B. Transparency	2.B.
2.C. Board Governance	2.C.
2.D. Academic Freedom and Freedom of Expression	2.D.
2.E. Knowledge Acquisition, Discovery and Application	2.E.
Criterion 3. Teaching and Learning for Student Success	Criterion 3. Teaching and Learning: Quality, Resources and Support, & Criterion 4. Teaching and Learning: Evaluation and Improvement
3.A. Educational Programs	3.A.
3.B. Exercise of Intellectual Inquiry	3.B.
3.C. Sufficiency of Faculty and Staff	3.C.
3.D. Support for Student Learning and Resources for Teaching	3.D.
3.E Assessment of Student Learning	4.B.
3.F Program Review	4.A.
3.G. Student Success Outcomes	4.C.
Criterion 4. Sustainability: Institutional Effectiveness, Resources and Planning	Criterion 5. Institutional Effectiveness, Resources and Planning
4.A Effective Administrative Structures	5.A.
4.B Resource Base and Sustainability	5.B.
4.C Planning for Quality Improvement	5.C.





Evaluation Outcomes



HOW DO WE PREPARE?

- Communicate/Share information
- Ask questions
- We need to have the same answers campus wide
- Poll departments, soft or deficient areas
- Update office area
- Update websites, names, emails, phone list, etc.
- Use “slides to study”

HOW DO WE PREPARE?

- Assist other departments
- Include students
- Business as usual, normal operations
- You are the “All-Stars”
- Continue this momentum!

CONSUMER INFORMATION and TITLE IV COMPLIANCE

ADMISSIONS POLICY
GRADUATION AND RETENTION RATES
SECONDARY STUDENT RECRUITMENT
EMERGENCY ACTION PLAN
EQUITY IN ATHLETICS
FINANCIAL AID POLICIES
TITLE IX POLICY
CAMPUS SAFETY AND FIRE REPORT

ANTICIPATED QUESTIONS

- How does the FSCC mission guide decision-making and planning?
- How does FSCC foster ethical behavior and integrity?
- How does FSCC support student success and retention?
- How does FSCC use data to drive improvement initiatives? What are recent examples?
- How does FSCC contribute to the broader community? What are recent examples?



WHAT DO YOU NEED TO KNOW?

- Why is accreditation important?
- What is the focus of each of the four criteria?
- What accreditation pathway do we use? What are the three parts?
- What is HLC's role in the accreditation process?
- Which Core Components do you help satisfy and how?
- Explain FSCC's Quality Initiative in Simple Terms
- FSCC's Mission, CORE Values, and Vision



WHAT DO STUDENTS NEED TO KNOW?

- Why is accreditation important?
- How do we maintain accreditation?
- Who is HLC?
- What is HLC's role in the accreditation process?
- What is FSCC's Mission and Core Values?
- When is FSCC's Comprehensive Visit?



ITEMS, DOCUMENTS, AND DATA TO PREPARE



MISSION STATEMENT

- Fort Scott Community College is an institution of higher learning with a long history of culture and diversity that provides affordable academic, technical, and occupational programs to meet student needs while fostering a mutually supportive relationship between the college and its communities.

VISION

- FSCC's vision for the future is to support "Students First, Community Always" through a central focus on teaching and learning; advancing strong, innovative programs and departments; maximizing and leveraging opportunities; initiating efficient and effective processes; and developing the region's workforce.

CORE VALUES

- Personal success and growth: Empower students, community, and employees to attain their goals by providing opportunities in a supportive, safe environment.
- Integrity and Respect: A focus on communication, relationships and experiences that value students, community, and employees; fostering a safe environment for all.
- Diversity and Inclusion: Operate as one college in purpose, plans, priorities, and processes.
- Stewardship: The careful, transparent, and responsible management of all resources under our care, including monetary, physical, and human resources

CURRENT FSCC GRANTS

▪ <u>Kansas SPARK - APRA State</u>	<u>Heavy Equipment Simulators</u>	<u>\$800,103</u>
▪ <u>Kansas Tourism State</u>	<u>Wayman AME Church Signage</u>	<u>\$9,226</u>
▪ <u>Kansas Commerce State</u>	<u>FRAME Home Construction Support</u>	<u>\$528,600</u>
▪ <u>Kansas Arts Commission</u>	<u>State Gordon Parks Museum Mural</u>	<u>\$6,874</u>
▪ <u>Kansas Board of Regents</u>	<u>State Nursing Improvement</u>	<u>\$30,099</u>
▪ <u>Farm Credit Foundation</u>	<u>AED Expansion</u>	<u>\$13,727</u>
▪ <u>TRIO</u>		<u>\$272,364</u>
▪ <u>Perkins Career and Technical Education Grant</u>		<u>\$100,000</u>



GRANTS SUBMITTED

- Patterson Family Foundation Pediatric Simulator \$118,879
- Fort Scott Community Foundation Senior-Versity Support \$1,000
- Bicknell Family Foundation Women's Luncheon Support \$2,000
- Lattner Family Foundation Student Pantry Support \$5,000



WHAT IS OUR RETENTION, GRADUATION, AND STUDENT SUCCESS RATE?

- Retention rate: 61%
- Graduation rate: 34%
- Student Success rate: 86%

DR. BARRETT KEY TAKEAWAY'S

- HLC on homepage
- Exec Team listed
- Site Team Change
- Mission statement and diversity (be able to speak to it)
- Assessment
- Org Chart
- Strategic Plan
- Board Policy
- Assurance Argument will be posted on our website



	ENROLLMENT COMPARISON			
Semester	Year	Term	Heads	Credit Hours
2020FA	2020	FA20	1,774	18,363
2021SP	2021	SP21	1,449	14,313
2021SU	2021	SU21	383	1,952
2021FA	2021	FA21	1,775	18,433
2022SP	2022	SP22	1,415	14,062
2022SU	2022	SU22	306	1,476
2022FA	2022	FA22	1,603	16,613
2023SP	2023	SP23	1,475	14,192
2023SU	2023	SU23	276	1,265
2023FA	2023	FA23	1,532	15,671
2024SP	2024	SP24	1,365	12,986
2024SU	2024	SU24	308	1,587
2024FA	2024	FA24	1,447	14,419
2025SP	2025	SP25	1,273	12,009
2025SU	2025	SU25	112	397
2025FA	2025	FA25	1,143	10,597

Yellow=Fall

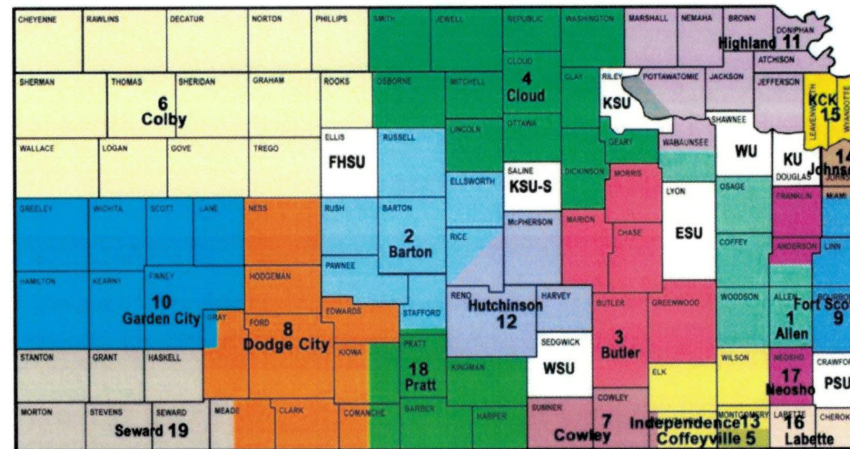
Green=Spring

Blue=Summer

THREE COUNTIES WE SERVE

MIAMI, LINN, BOURBON

MAP OF SERVICE AREAS FOR KANSAS COMMUNITY COLLEGES



- | | |
|---|--|
| 1. Allen County Community College, Topeka | 12. Hutchinson Community College, Hutchinson |
| 2. Barton County Community College, Great Bend | 13. Independence Community College, Independence |
| 3. Butler County Community College, El Dorado | 14. Johnson County Community College, Overland Park |
| 4. Cloud County Community College, Concordia | 15. Kansas City Kansas Community College, Kansas City |
| 5. Coffeyville Community College, Coffeyville | 16. Labette Community College, Parsons |
| 6. Colby Community College, Colby | 17. Neosho County Community College, Chanute |
| 7. Cowley County Community College, Arkansas City | 18. Pratt Community College, Pratt |
| 8. Dodge City Community College, Dodge City | 19. Seward County Community College/Area Technical School, Liberal |
| 9. Fort Scott Community College, Fort Scott | State Universities/Washburn |
| 10. Garden City Community College, Garden City | Unassigned |
| 11. Highland Community College, Highland | |

STRATEGIC PLAN 2022-2027

- Dr. Ralph Beacham
- Goal 1 - Foster Relationships with the Communities Fort Scott Community College Serves
- Goal 2 - Cultivate Quality Enhancements for Education and Learning
- Goal 3 - Promote Student Success
- Goal 4 - Fiscal Responsibility
- Goal 5 - Promote Strategies for Employees Success

STRATEGIC PLAN AND COMMITTEE MEMBERS

Position	Current Name	(Goal - Strategy - Tactic)									
President	Jack Welch	1-2-3	4-1-1	4-1-5	5-2-2	5-2-4					
VP Finance & Operations	Jim Chandler	1-1-3	1-2-1	1-2-3	2-2-3	4-1-1	4-1-3	4-1-4	4-2-4		
VP Student Affairs	Vanessa Poyner	1-2-1	1-2-2	1-2-3	2-2-2	2-2-3	4-2-1				
VP Academic Affairs	Larry Guerrero	1-2-1	1-2-3	2-1-1	2-1-2	2-1-3	2-2-1	2-2-3	2-3-2a	2-3-2b	2-3-3a
Assoc. Dean Student Services	Ashley Keylon	1-2-1	1-2-3	2-2-2	2-2-3	3-1-1	3-1-3	3-1-4	3-2-4	3-3-1	3-3-2
Dir Human Resources	Juley McDaniel	1-1-3	1-2-2	2-2-2	5-1-1	5-2-1	5-2-2	5-2-3	5-2-4		
Dir CTEC		1-1-1	1-2-1	1-2-3	2-2-3	3-2-3					
Dir Inst Research/Perkins/Effectiveness	Ben Souza	1-2-2									
		2-1-1	2-1-4	2-3-1	2-3-4a	2-3-4b					
Webmaster	Jared Dorsey	1-1-1	1-1-3	2-1-3	2-1-4						
Dir Financial Aid	Sara Smith	4-1-1									
Dir IT	Chris Larsen	2-3-3a	4-2-3	4-2-5	4-2-6						
Dir Lib Svs	Susie Arvidson	2-1-1	2-3-4								
Printer/Transportation	Charles Howser	4-2-4									
Dir Facilities & Operations	Steve Denton	4-1-2	4-1-4	4-1-5	4-2-2						
Dir Parks Museum	Kirk Sharp	1-2-2									
Employee Relations Committee	Stacy Bishop	5-2-3	5-2-4								
Community Relations Committee		1-1-2									
Dept. Head Business	Kevin Thomure	2-3-3b									
Dept. Head Math/Science	Tracy Springer	2-3-3b									
Dept. Head English/Fine Arts	Maria Bahr	2-3-3b									
Dept. Head Agriculture	Sara Sutton	2-3-3b									
Dept. Head Allied Health	Vickie Laderer	2-3-3b									
Dept. Head Nursing	Vickie Laderer	2-3-3b									



WHEN WAS FSCC FOUNDED?

- FSCC was established in 1919

WHAT ARE THE ADMISSION STEPS?

- Submit Application (online)
- (ACT)(SAT)(Accuplacer)(GPA) (options)
- Submit High School transcripts
- College transcripts
- Academic Advising
- FAFSA
- Enroll

WHAT IS THE CURRENT ENROLLMENT, RETENTION, GRADUATION and STUDENT SUCCESS RATES

- 1,143 students (unduplicated)
- Retention Rate-61%
- Graduation Rate-34%
- Student Success Rate-86%
- Student to Faculty Ratio-14:1

WHAT IS THE CURRENT TUITION AND FEES AT FSCC?

- \$50 per/cr/hr
- \$69 fees
- \$119 per/cr/hr

WHAT ARE FACULTY LOADS PER SEMESTER/YEAR?

- 15 HOURS PER SEMESTER
- 30 HOURS PER YEAR

WHAT IS THE AVERAGE CLASS SIZE AT FSCC?

- 3,620 duplicated students / 354 classes = 10.22

WHAT PERCENTAGE OF FSCC STUDENTS RECEIVE FINANCIAL AID?

- 99%
- 61% PELL

WHAT IS A TITLE IV SCHOOL? ARE WE A TITLE IV SCHOOL?

- A Title IV School is an Institution that processes U.S. federal student aid, such as Stafford Loans and Pell Grants.
- YES

COLLEGE FACULTY, DEGREES, and CERTIFICATES

Number of Full-Time Faculty 35

Number of Adjunct Faculty 36

Number of Associates Degrees (AA, AS, AAS, AGS),

Number of Certificates 11

HOW MANY DEPARTMENTS DO WE HAVE AND CAN WE NAME THEM?

- 4 Departments
- Fine Arts and Humanities
- Math and Science
- Business, Social Sciences, Behavioral Sciences, Criminal Justice, and Education
- Agriculture

HOW MANY HOURS ARE IN THE CORE AND NEEDED FOR GRADUATION?

- 35 HOURS IN THE CORE
- 60 TOTAL HOURS NEEDED FOR GRADUATION

WHAT IS OUR ELECTRONIC JOURNAL DATABASE FOR OUR STUDENTS?

- Kansas State Online Library to access online databases

WHICH IS OUR LEARNING MANAGEMENT SYSTEM (LMS)?

- Blackboard

WHICH IS OUR STUDENT INFORMATION SYSTEM (SIS)?

- JENZABAR J1

HOW MANY FULL TIME EMPLOYEES WORK AT FSCC?

- ≈135 employees

WHO IS OUR TITLE IX DIRECTOR?

- Vanessa Poyner

WHO IS OUR DIRECTOR OF INSTITUTIONAL RESEARCH?

- Ben Souza

WHO IS OUR NEW PRESIDENT? FIRST AND LAST NAME?

- Dr. Jack Welch



WHEN IS OUR HLC VISIT?

- October 13th and 14th, 2025



HOW MANY CRITERIA DOES HLC REQUIRE WE DOCUMENT ON OUR ASSURANCE ARGUMENT?

4 Criteria



WHICH OF THE FOLLOWING IS A POTENTIAL CONSEQUENCE FOR A COLLEGE THAT LOSES HLC ACCREDITATION?

- **Loss of access to federal financial aid and transferability of credit hours**



WHAT IS OUR RETENTION RATE? GRADUATION RATE? STUDENT SUCCESS RATE?

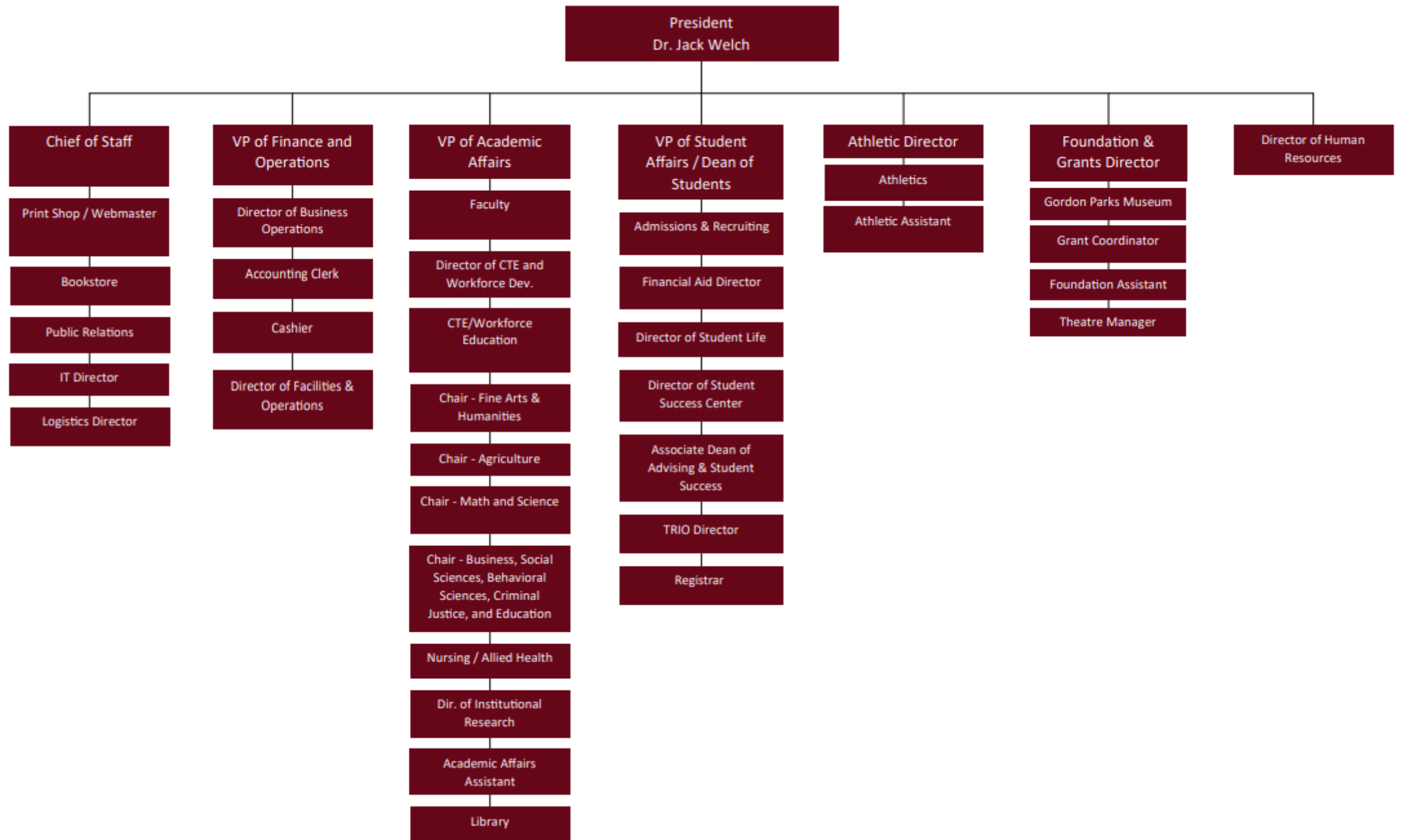
- **61% Retention rate**
- **34% Graduation rate**
- **86% Student Success rate**



HOW MANY COUNTIES DO WE SERVE? COULD YOU LIST THEM?

- 3 Counties
- Bourbon
- Linn
- Miami





FACULTY SCHOLARSHIP

- Present at a scholarly symposium or conference, author books for your field, or the general public, and produce scholarship for top journals around the country and the world.
- Research with your students

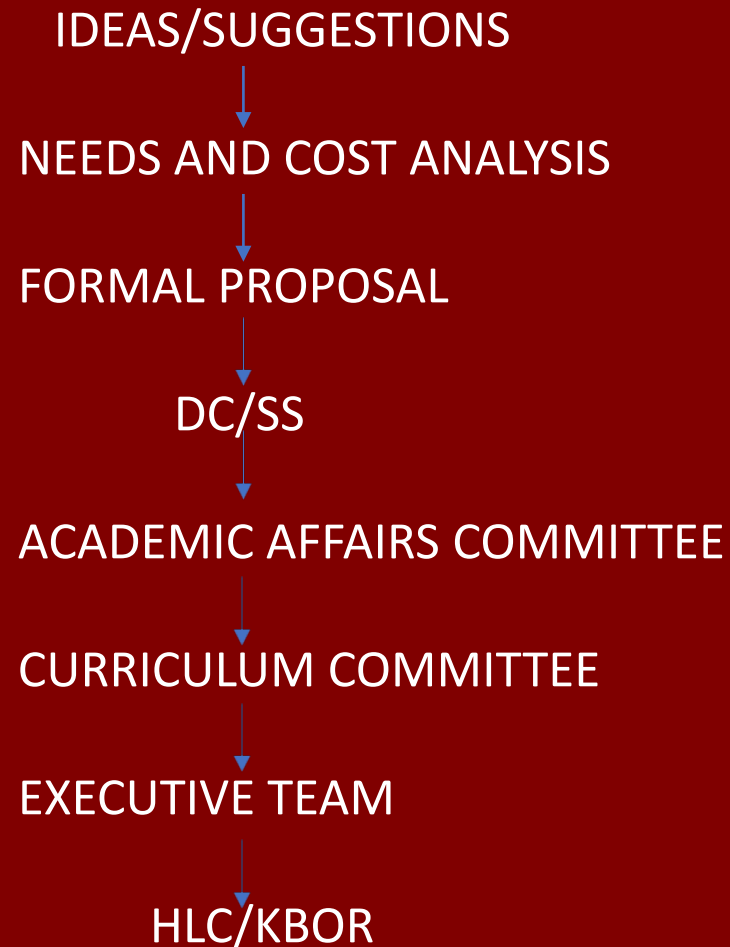
FACULTY PROFESSIONAL DEVELOPMENT

- Professional development for educators may include teacher training, and is usually considered pre-service, or before beginning teaching.
- Lunch and Learn
- Attend state or national conferences for up-to-date knowledge
- Classroom peer reviews to assist each other
- In-Service
- Co-requisite Symposium

SHARED GOVERNANCE

- A collaborative decision process between college administration, faculty, staff, and students. This entails all bodies working together to advance the mission of the college as a community dedicated to excellence in teaching, scholarship, and service.
- Proposals brought forward to the Chairs.
- Chairs bring proposals to Vice Presidents for dialogue and voting during Executive Meetings.

HOW ARE COURSES, CURRICULUMS APPROVED ON CAMPUS?



SUPPORT FOR STUDENT LEARNING & TEACHING RESOURCES

- Academic Advisors: Two FT advisors: Ashley Keylon, Quenton Choice
- TRIO Advisors + program director: Holli Mason, Alisa Nolan
- Financial Aid: scholarships, literacy sessions; proactive text/email outreach and billing timelines.
- Tutoring: in-person/online; published schedules each term; robust TRIO services for first-gen/low-income/disability.
- Student life: weekly activity bulletin; inclusive co-curriculars.
- Library: Susie Arvidson

WHAT ARE SOME CAMPUS LIFE STUDENT ORGANIZATIONS?

- Choir
- Band
- Theater
- Christians on Campus
- Collegiate Farm Bureau
- Livestock Judging
- Meat Judging
- Phi Theta Kappa
- President Ambassadors
- SkillsUSA
- STEAM Club
- Student Government
- Student Nursing Organization

HOW MANY CAREER AND TECHNICAL EDUCATION PROGRAMS DO WE HAVE?

- WORKFORCE EDUCATION PLEASANTON-JAY ALLEN
- WORKFORCE EDUCATION MIAMI COUNTY-BUDDY TANCK
- HARLEY DAVIDSON FRONTENAC-DANNY FLEMING
- JOHN DEERE TECH-DALE GRIFFITH
- WORKFORCE EDUCATION FORT SCOTT-BRANDON JOHNSON
- COSMOTOLOGY

FORMS OF ASSESSMENT ON CAMPUS

- Annual Assessments
- Program Reviews (Academic and Campus Wide)
- End of Course Evaluations
- Curriculum Change Process

WHAT IS THE NAME OF OUR ATHLETIC GOVERNING BODY?

- NATIONAL JUNIOR COLLEGE ATHLETIC ASSOCIATION (NJCAA)
- NATIONAL INTERCOLLEGIATE RODEO ASSOCIATION (NIRA)

HOW MANY TOTAL SPORTS DO WE HAVE IN ATHLETICS?

- 10 TOTAL TEAM SPORTS
- Volleyball
- Men's & Women's Basketball
- Men's & Women's Track
- Men's & Women's Cross Country
- Baseball
- Softball
- Rodeo

WHAT ARE OUR SCHOOL COLORS AND MASCOT

- Maroon and Grey
- Greyhounds

WE PARTICIPATE IN WHICH ATHLETIC CONFERENCE?

- Kansas Jayhawk Community College Conference (KJCCC)

WHICH IS OUR FOOD SERVICES VENDOR?

- Great Western Dining
- Great Food!

WHO IS OUR NEW COLLEGE SCHOOL BASED THERAPIST?

- Emily Vallely

WHO IS OUR DIRECTOR OF STUDENT LIFE?

- Alyssa Martin

WHO ARE OUR ACADEMIC ADVISORS?

- Ashley Keylon
- Quenton Choice

WHO ARE OUR TRIO ADVISORS?

- Holli Mason
- Alisa Nolan

WHO IS OUR DIRECTOR OF FINANCIAL AID?

- Sara Smith

WHO IS OUR DIRECTOR OF LIBRARY SERVICES?

- Susie Arvidson

WHO IS OUR DIRECTOR OF THE GORDON PARKS MUSUEM?

- Kirk Sharp

WHO IS OUR NEW PHI THETA KAPPA SPONSOR?

- Ashley Page